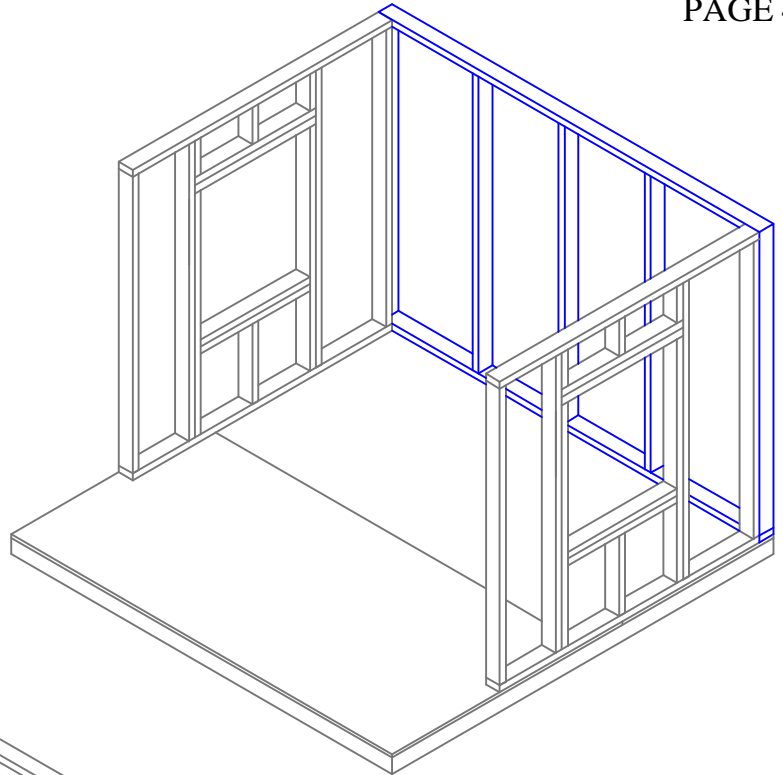


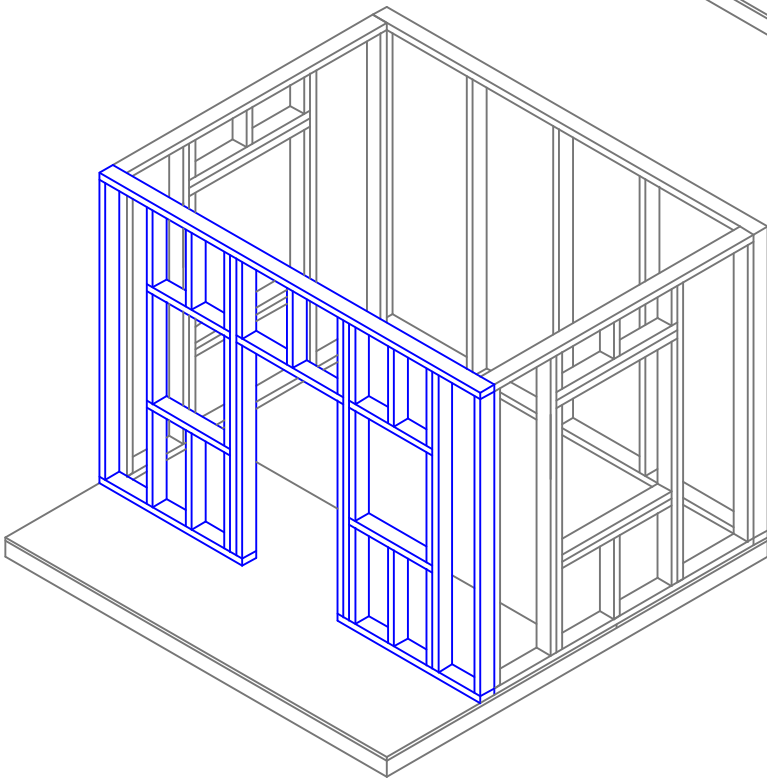
**STEP #6**

INSTALL FRAMED FRONT AND BACK WALL PANELS (UN-SHEETED) AS SHOWN IN FIGURES #10 AND #11. STAND BACK WALL UP SUCH THAT OUTSIDE IS FLUSH WITH THE BACK OF THE FLOOR PANEL. NAIL THROUGH BOTTOM PLATE INTO FLOOR PANEL WITH 8d COMMON NAILS, 6" ON CENTER, STAGGERED. INSTALL FRONT WALL PANEL BUTTED UP AGAINST THE SIDE WALLS. USE LEVEL TO ENSURE WALLS ARE PLUMB. SHIM TOP OR BOTTOM OF WALL TO PLUMB AS NECESSARY. NAIL THROUGH OUTSIDE STUDS ON LEFT AND RIGHT WALL PANELS INTO OUTSIDE STUDS OF FRONT AND BACK WALL PANELS @ 6" ON CENTER. TEMPORARY BRACES FOR LEFT AND RIGHT WALL PANELS CAN NOW BE REMOVED.



**FIGURE #10**

BACK WALL INSTALLATION

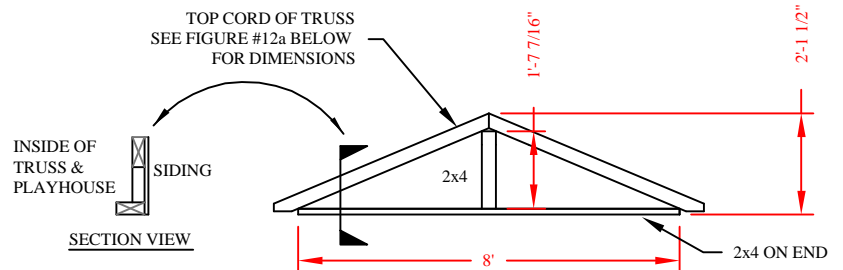
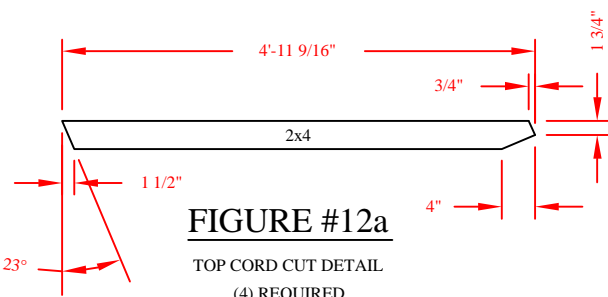


**FIGURE #11**

FRONT WALL INSTALLATION

**STEP #7**

FRAME TWO END TRUSSES AS SHOWN IN FIGURE #12. CUT TOP CORD ACCORDING TO FIGURE #12a. BOTTOM CORD OF TRUSS TO BE 8'-0" LONG AND SITTING ON EDGE AS SHOWN IN SECTION VIEW. MIDDLE VERTICAL MEMBER TO BE 19-7/16" LONG. ASSEMBLE TRUSS ON FLAT SURFACE, TOE-NAILING JOINTS FOR TEMPORARY SUPPORT.



OUTSIDE TRUSS FRAMING - (2) REQUIRED